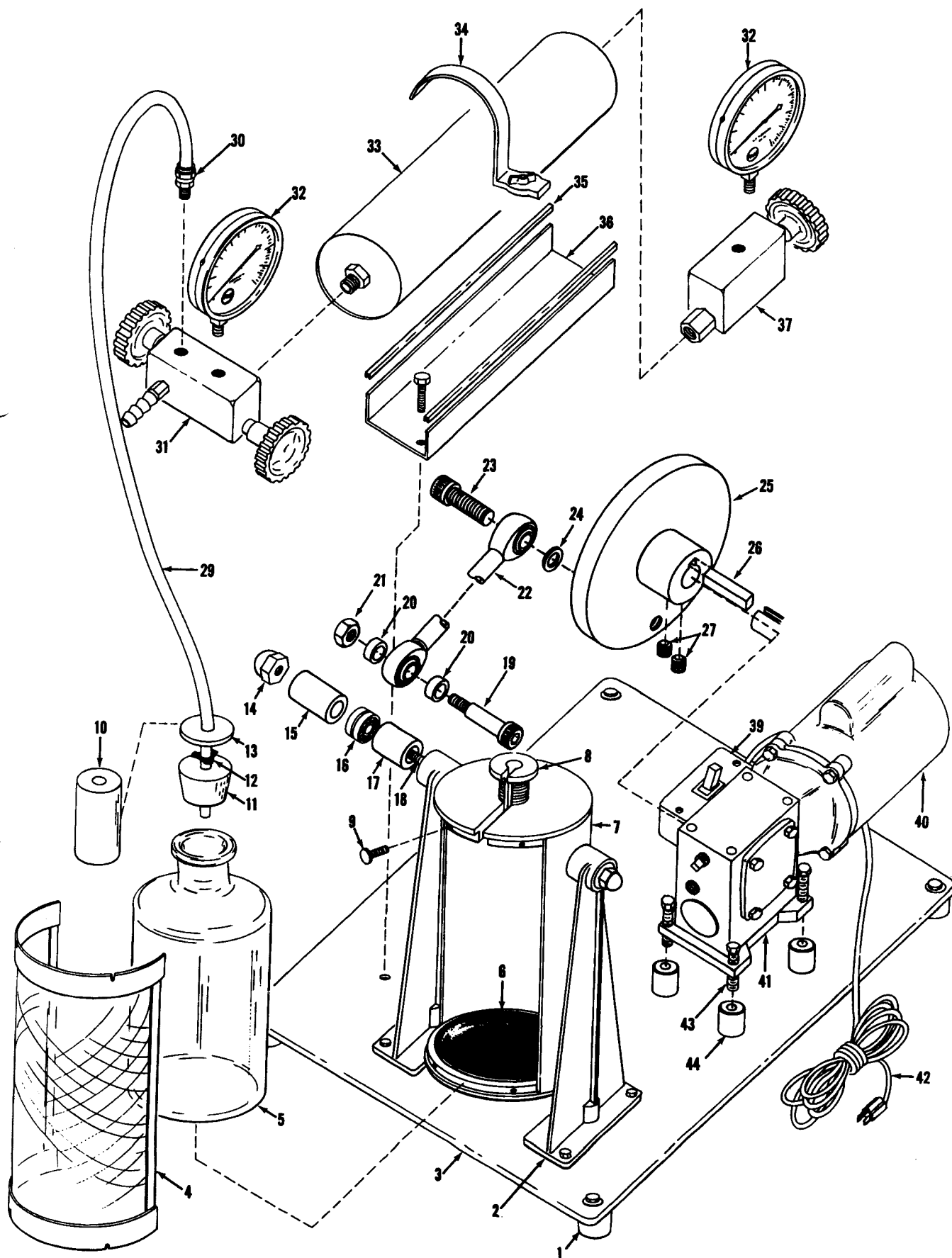


Ablagefernanhänger

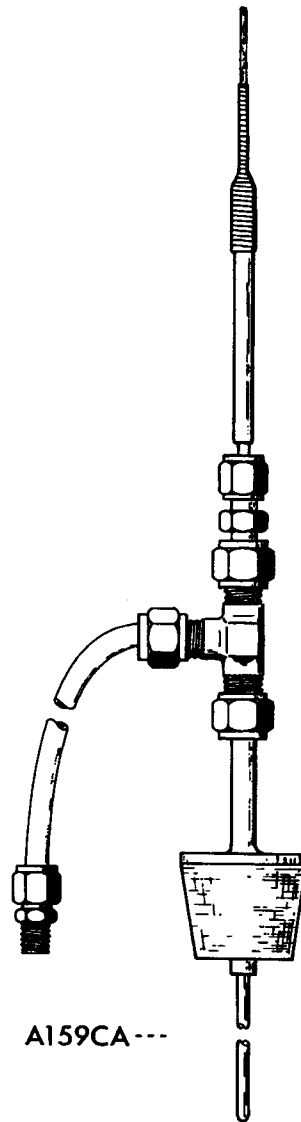
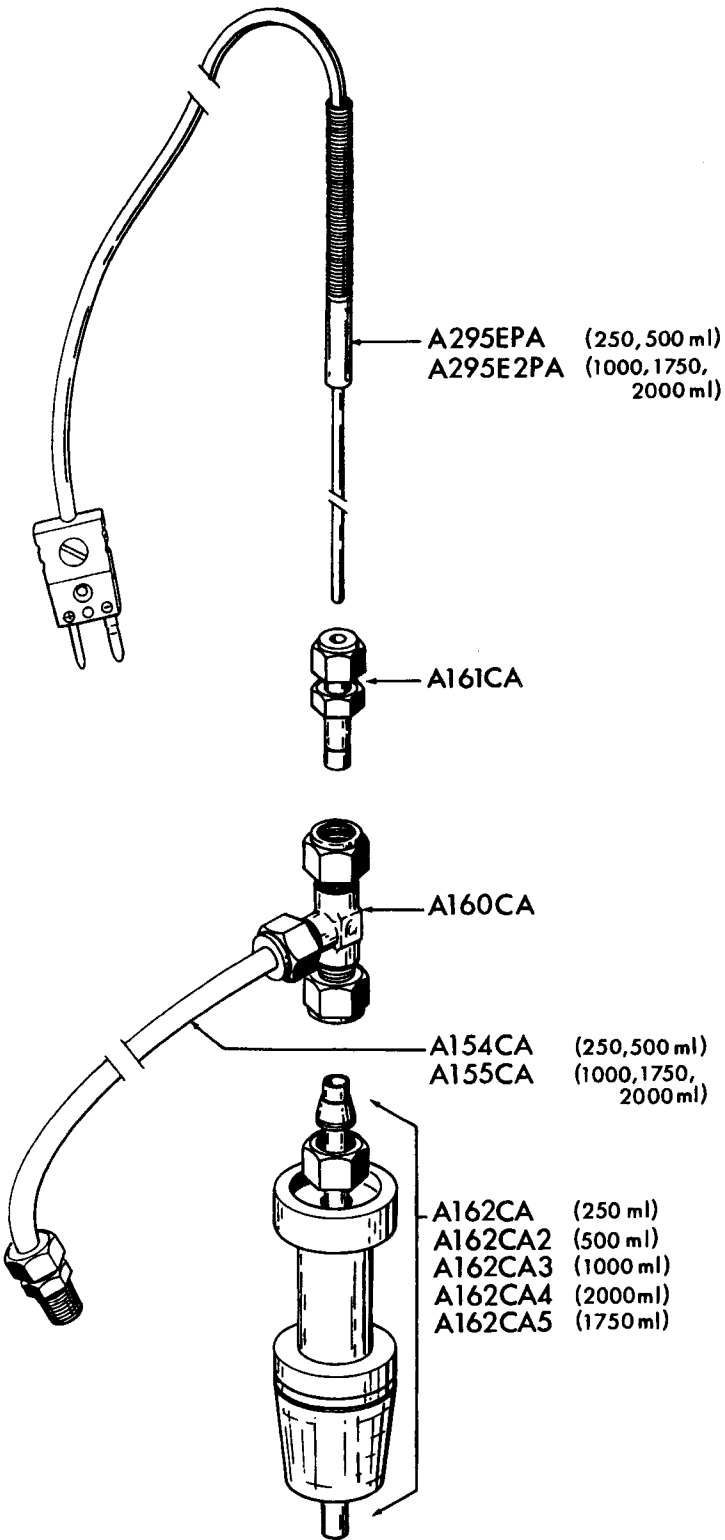
PARTS FOR 3921 HYDROGENATION APPARATUS





THERMOCOUPLE ASSEMBLIES

Assembly No.	Equipped With Thermocouple No.	Fits Bottle	
		No.	Size
A159CAPA	A295E	66CA2	250 ml
A159CA2PA	A295E	66CA	500
A159CA3PA	A295E2	71CA	1000
A159CA4PA	A295E2	72CA 72CA4	2000 3000
A159CA5PA	A295E2	126CA	1700



REACTION BOTTLES FOR PARR HYDROGENATORS

Apparatus No.	Bottle No.	Size ml	Bottle Type	Maximum Working Pressure psig	Requires Connector No.
3911	66CA2	250	Borosilicate Glass	60	A122CA2*
3911	66CA	500	Borosilicate Glass	60	A122CA
3911	66CA3	500	Borosilicate Glass Fiberglass Covered	60	A122CA
3921	71CA	1000	Borosilicate Glass	40	A123CA2*
3921		1000	Borosilicate Glass Fiberglass Covered	40	A123CA2*
3921	72CA	2000	Borosilicate Glass	30	A123CA
3921	72CA3	2000	Borosilicate Glass Fiberglass Covered	30	A123CA
3921	72CA4	2500	Hand Blown, Heavy Wall Borosilicate Glass	60	A123CA
3921	126CA	1700	Stainless Steel	60	A155CA Tube with 133CA2 Spacer Spool



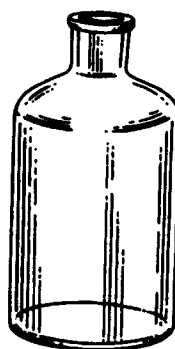
66CA2
250 ml Bottle



66CA
500 ml Bottle



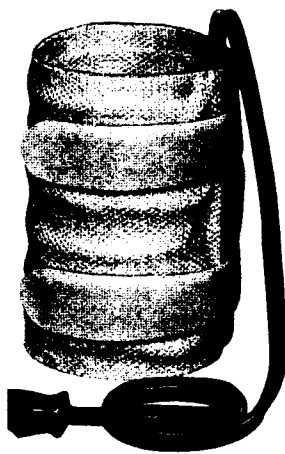
71CA
One Liter Bottle



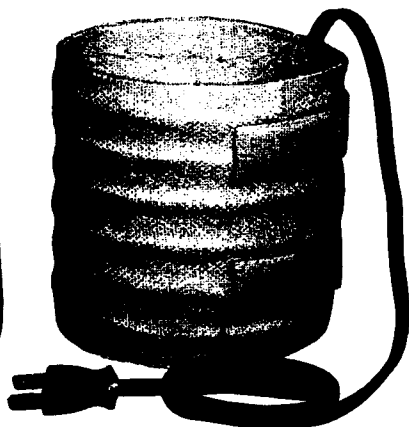
72CA
Two Liter Bottle



126CA Stainless Bottle
with A134CA2 Cover



A450E Heating Mantle



A451E Heating Mantle

HEATING MANTLES

Mantle No.	Watts	Volts	Use with Bottle No.
A450EEB	100	115	66CA, 66CA2
A450EEE	100	230	66CA, 66CA2
A451EEB	200	115	71CA, 72CA, 72CA4, 126CA
A451EEE	200	230	71CA, 72CA, 72CA4, 126CA

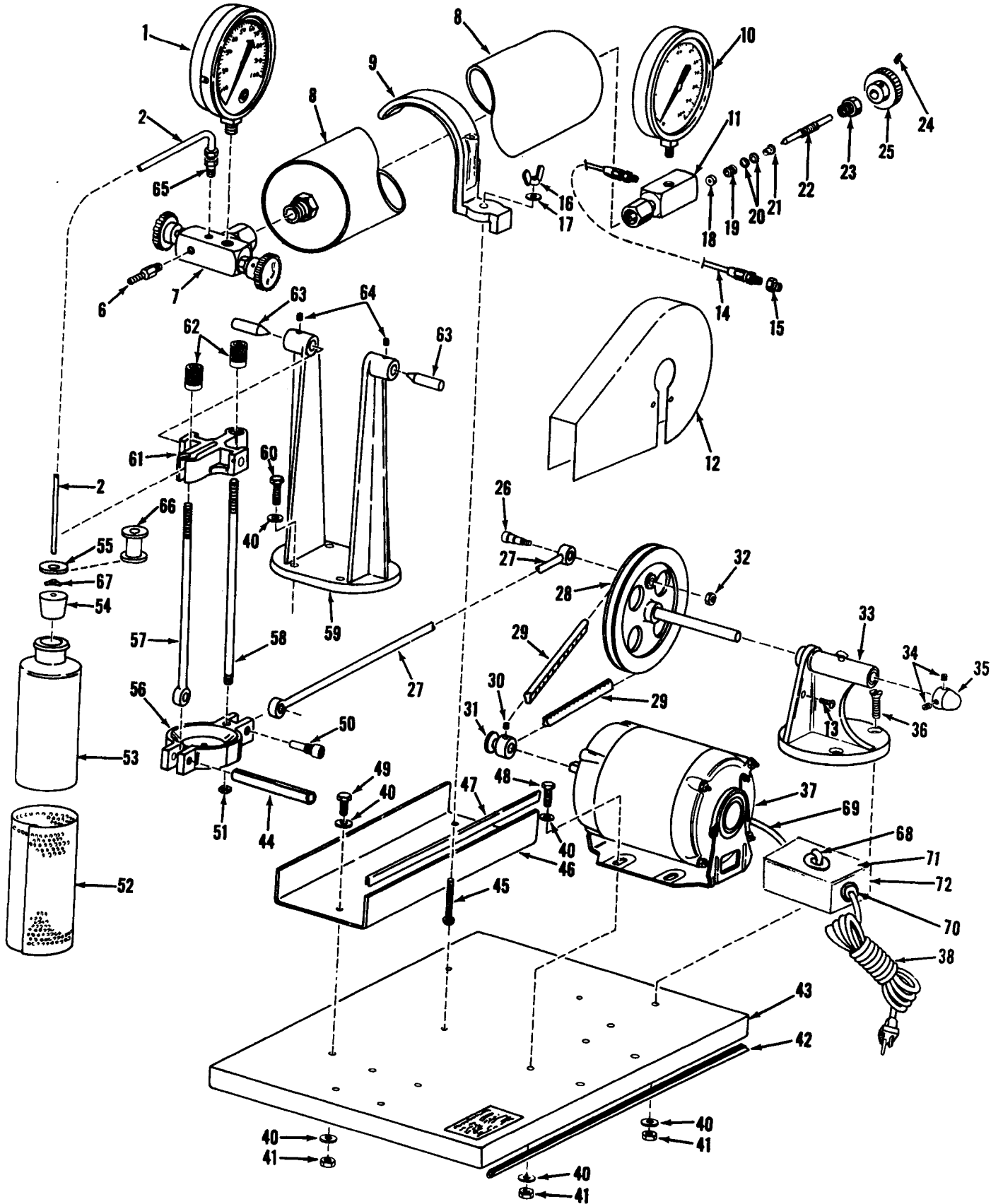


PARTS FOR 3911 HYDROGENATION APPARATUS

Key No.	Part No.	Description
1	12CA	Gage, 0-100psi, 4½"dia.
2	A154CA	Tube, polypropylene, 25" with A102CA connector
6	60HWBB	Hose nipple
7	3A93CA	Valve assembly with gage
8	A16CA	Tank, 4-liter, brass
	A16CA2	Tank, 1-liter, brass
9	11CA	Tank clamp
10	12CA	Gage, 0-100psi, 4½"dia.
11	AA92CA	Valve assembly with gage
12	A150CA	Belt guard
14	A118CA	Gas hose w/fittings, 6ft.
15	504HC	Reducer, 1/4" to 1/8"NPT
16	SN2520WG	Wing nut, 1/4"-20
17	SW25FT	Washer for 1/4" bolt
18	20VB	Valve seat, Kel-F
19	21VBBB	Lantern ring, brass
20	4VB3	Packing ring, Teflon
21	6VBBB	Packing cover, brass
22	A112VB4AK	Valve needle
23	8VB2	Packing nut
24	SC1632SC03L	Set screw, 8-32x3/16"
25	A150VB	Knob (includes screw)
26	19CA3	Crank pin with nut
27	A58CA	Connecting rod with bronze bushings
28	8CA3	Flywheel with shaft
30	SC2520SC04	Set screw, 1/4-20x1/4
31	34CA3	Motor pulley
32	SN2520HX	Jam nut, 1/4-20
33	A4CA	Bearing w/bronze bushgs
34	SC2520SC04	Set screw, 1/4-20x1/4
35	18CA2	Collar
36	SA3118FT14	Mach. screw, 5/16-18, 7/8
37	43CAEA	Motor, 115v/60Hz
	43CAEF	Motor, 230v/50Hz
	43CAEG	Motor, 115v/60Hz, Exp-prf
	43CAEK	Motor, 230v/50Hz, Exp-prf
38	34E2	Cord set, 115v
	1230EEE	Cord set, 230v

Key No.	Part No.	Description
40	SW31FT	Washer for 5/16"bolt
41	SN3118HX	Jam nut, 5/16-18
42	51CA2	Base edge strip, rubber
43	1CA2	Base plate, bare
44	SR3118	Roll pin, 5/16x1-1/8
45	SA2520RD28	Machine screw, rnd.hd. 1/4-20x1-3/4
46	49CA	Channel, tank support
47	51CA4	Channel edge strip, vinyl
48	SA3118FT14	Mach. bolt, 5/16-18x7/8
49	SB3118HX10	Mach. bolt, 5/16-18x1/2
50	TD3118SC12	Soc. hd. shoulder bolt, 5/16-18x3/4
51	SN3124HX	Hex nut, 5/16-24
52	65CA	Bottle guard
53	66CA	Bottle, Pyrex, 500mL
	66CA2	Bottle, Pyrex, 250mL
	66CA3	Bottle, Fiberglassed, 500mL
		Stopper, #6, 1-hole
55	61CA4	Washer
56	53CA2	Base, bottle clamp
57	A55CA	Tie rod with eye
58	56CA	Tie rod, long
59	2CA2	Shaker column, bare
60	SB3118HX14	Mach. bolt, 5/16-18x7/8
61	54CA	Top, bottle clamp
62	59CA	Nut, tie rod, knurled
63	5CA3	Pivot pin
64	SC2520SC04	Set screw, 1/4-20x1/4
65	A102CA	Tubing connector, brass
66	101CA2	Spacer for 250mL bottle
67	166CA	Retaining ring
68	1356E	Switch
69	477E	Cord
70	A491E2	Strain relief (115v)
	1782HC	Strain relief (230v)
71	80E3	Switch plate
72	79E	Switch box

PARTS FOR 3911 HYDROGENATION APPARATUS





PARTS FOR 3921 HYDROGENATION APPARATUS

Key No.	Part No.	Description
1	62CA	Rubber foot
2	92HC5	Shaker column
3	73CA3	Base plate
4	A77CA2	Bottle guard, front
5	71CA	Reaction bottle, 1 liter
	71CA2	Reaction bottle, 1 liter, Fiberglassed
	72CA	Reaction bottle, 2 liter
	72CA3	Reaction bottle, 2 liter, Fiberglassed
	72CA4	Bottle, heavy wall, 2½ liter
6	172CA	Bottle pad, Neoprene
7	A200CA	Rear guard assembly
8	79CA2	Bottle clamp screw, slotted
9	RA2520KN08	Thumb nut, 1/4-20x1/2
10	80CA2	Spacer for 1-liter bottle
11	62CA2	Stopper, #7½, 1-hole
12	166CA	Retaining ring
13	82CA2	Washer
14	SN5020HC	Cap nut, 1/2-20
15	427E3	Bushing, outer
16	1055HC	Bearing
17	427E4	Bushing, inner
18	TB5020HX36	Bolt, 1/2-20
19	89CA2	Crank pin
20	109CA2	Spacer
21	SN3118HX	Hex lock nut, 5/16-18
22	A87CA4	Connecting rod assembly
23	SB3716SC16	Soc. hd. cap screw, 3/8-16x1
24	SW39FT	Flat washer, .063x3/8ID
25	1065HC	Flywheel

Key No.	Part No.	Description
26	DA0018SQ	Key
27	SC3118SC06	Soc. hd. set screw, 5/16-18x3/8
29	A155CA	Tube, polypropylene, 35" with A102CA connector
30	A102CA	Tubing connector, brass
31	3A93CA	Valve assembly with gage
32	12CA	Gage, 0-100psi, 4½" dia.
33	A16CA	Tank, 4-liter
	A16CA2	Tank, 1-liter
34	11CA	Tank clamp
35	51CA4	Channel edge strip, vinyl
36	49CA	Channel, tank support
37	AA92CA	Valve assembly with gage
39	79E	Switch box
	1356E	Switch
	80E3	Switch plate
40	A388EL	Motor, end mounted, 115v/60Hz
	A388EM	Motor, end mounted, 230v/50Hz
	A388EEG	Motor, end mounted, expl. proof, 115v/60Hz
	A388EEK	Motor, end mounted, expl. proof, 230v/50Hz
41	A387E2	Gear box, 10-1 ratio
42	34E2	Cord set, 115v
	1230EEE	Cord set, 230v
43	SB3118HX36	Hex cap screw, 5/16-18x2-1/4
44	180HC	Motor support